

PLEASANT VALLEY PARK
 2557 Pleasant Valley Road
 Murrysville PA 15668

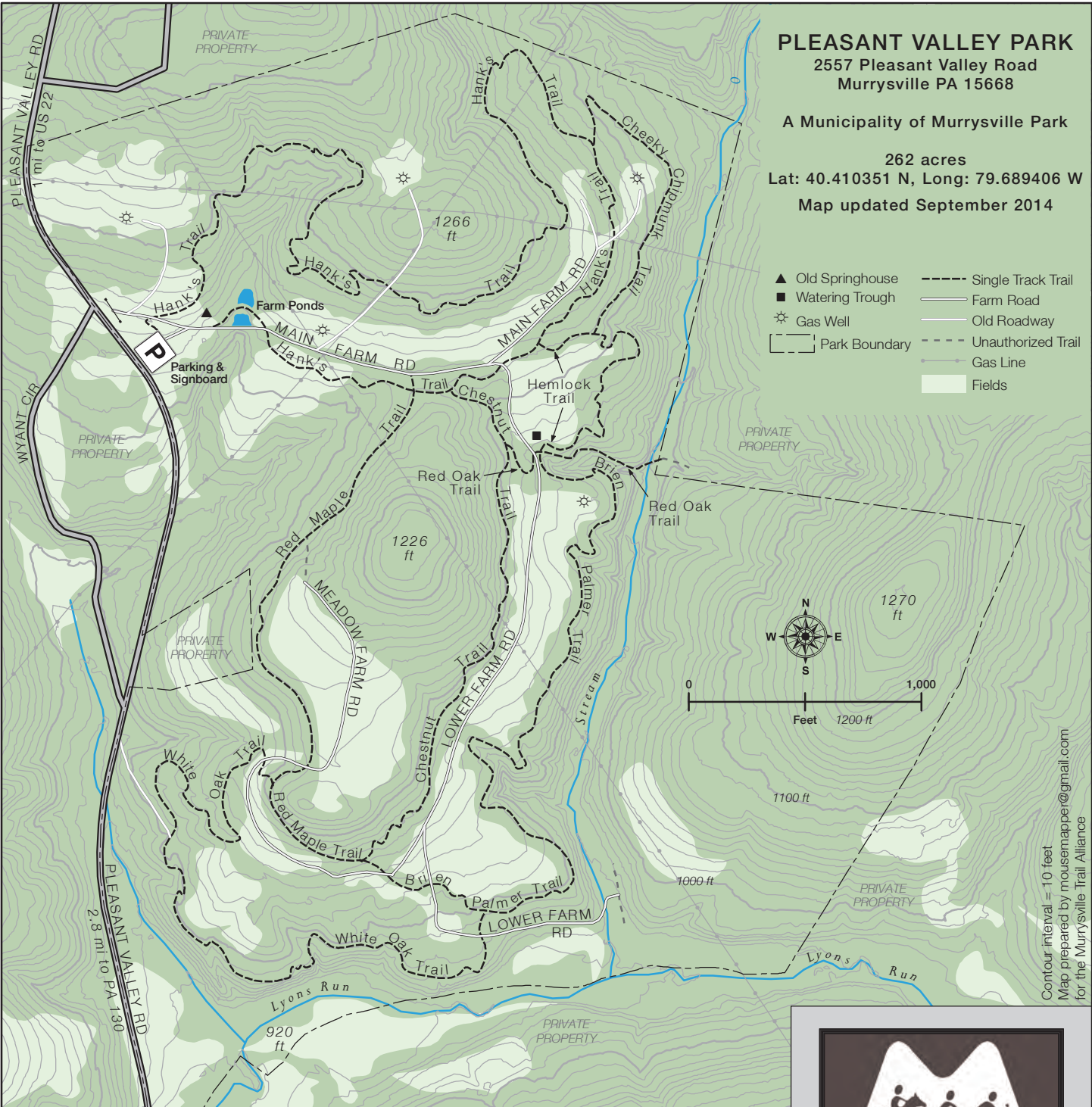
A Municipality of Murrysville Park

262 acres

Lat: 40.410351 N, Long: 79.689406 W

Map updated September 2014

- ▲ Old Springhouse
- Watering Trough
- ☼ Gas Well
- ▭ Park Boundary
- Single Track Trail
- Farm Road
- Old Roadway
- - - Unauthorized Trail
- Gas Line
- Fields



Contour interval = 10 feet
 Map prepared by mousemappet@gmail.com
 for the Murrysville Trail Alliance

Cheeky Chipmunk Trail	0.30 mi	Forest trail with views over hillside
Chestnut Trail	0.48 mi	Forest trail along hillside with some views of meadow below
Hank's Trail	1.67 mi	Loop trail through varied forest, with many turns & short climbs
Hemlock Trail	0.30 mi	Forest trail along edge of meadow & deepening ravine
Brien Palmer Trail	0.86 mi	Passes in & out of woods; some views of beautiful ravines
Red Maple Trail	0.55 mi	Forest trail along hillside under high canopy
Red Oak Trail	0.15 mi	Descending spur through forest, much along ravine to stream
White Oak Trail	0.80 mi	Forest loop with gentle climbs & turns; parts overlook steep slopes
Main Farm Rd	0.47 mi	Main roadway along meadows and treelines
Lower Farm Rd	1.10 mi	Mowed roadway descending along meadows to a valley stream
Meadow Farm Rd	0.68 mi	Farm road crossing many trails and high meadow of park

Note: Use of unauthorized trails, which may lead to private property, is discouraged.



Celebrating Outdoor Murrysville

www.MurrysvilleTrails.org

